

Supplementary Information

Availability of prey and natural habitats are related with temporal dynamics in range and habitat suitability for Asiatic Cheetah
 Leili Khalatbari, Gholam Hosein Yusefi, Fernando Martínez-Freiría, Houman Jowkar, José Carlos Brito

Table S1: Anthrome levels and changes in the percentage of coverage by each level from 1900 to 2000 in the study area (quantified from Ellis et al., 2010).

Anthrome levels	Anthrome classes	% 1900	% 2000	Change (level)	Change (class)
Dense Settlements	11: Urban	0.1	0.4	0.3	0.3
	12: Mixed settlements	0.1	0.2		0.1
Villages	21: Rice villages	0.0	0.0	3.2	0.0
	22: Irrigated villages	0.1	2.4		2.3
	23: Rainfed villages	0.6	1.0		0.4
	24: Pastoral villages	0.1	0.5		0.4
Croplands	31: Residential irrigated croplands	0.9	5.2	11.8	4.3
	32: Residential rainfed croplands	4.0	7.2		3.2
	33: Populated croplands	1.5	5.1		3.7
	34: Remote croplands	0.0	0.5		0.5
Rangelands	41: Residential rangelands	1.1	7.6	9.8	6.4
	42: Populated rangelands	16.8	18.0		1.1
	43: Remote rangelands	14.6	16.8		2.2
Seminatural	51: Residential woodlands	1.3	0.1	−17.7	−1.1
	52: Populated woodlands	3.0	0.1		−2.9
	53: Remote woodlands	0.5	0.0		−0.5
	54: Inhabited treeless and barren lands	30.4	17.3		−13.1
Wildlands	61: Wild woodlands	0.3	0.1		−0.1
	62: Wild treeless and barren lands	24.7	17.5	−7.3	−7.2

Supplementary Information

Availability of prey and natural habitats are related with temporal dynamics in range and habitat suitability for Asiatic Cheetah
Leili Khalatbari, Gholam Hosein Yusefi, Fernando Martínez-Freiría, Houman Jowkar, José Carlos Brito

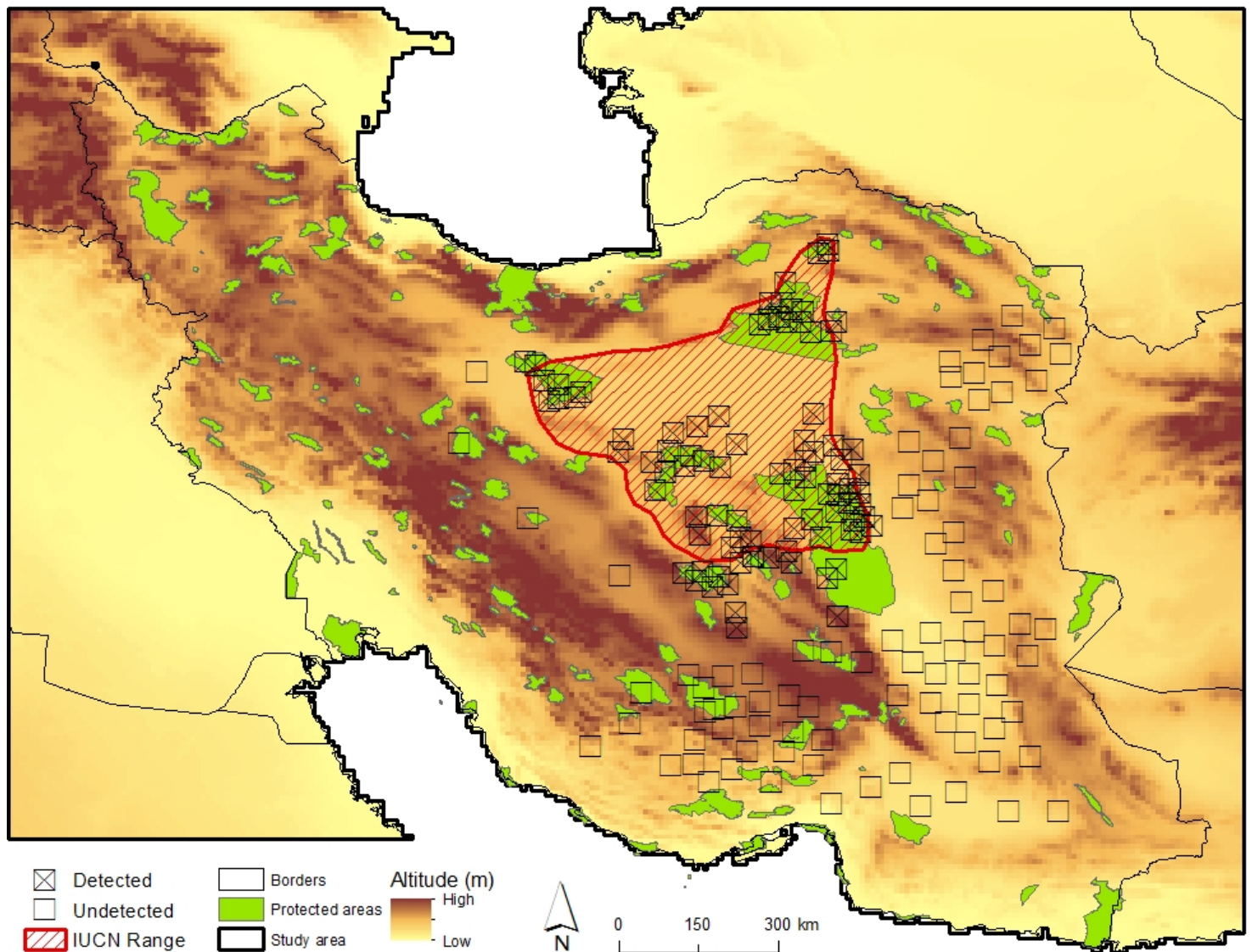


Figure S2: Surveyed area for detection of cheetah presence in areas where they were known to distribute. Checked boxes indicate areas where signs of species presence was observed while unchecked boxes shows areas where no signs of presence was detected.

Supplementary Information

Availability of prey and natural habitats are related with temporal dynamics in range and habitat suitability for Asiatic Cheetah
 Leili Khalatbari, Gholam Hosein Yusefi, Fernando Martínez-Freiría, Houman Jowkar, José Carlos Brito

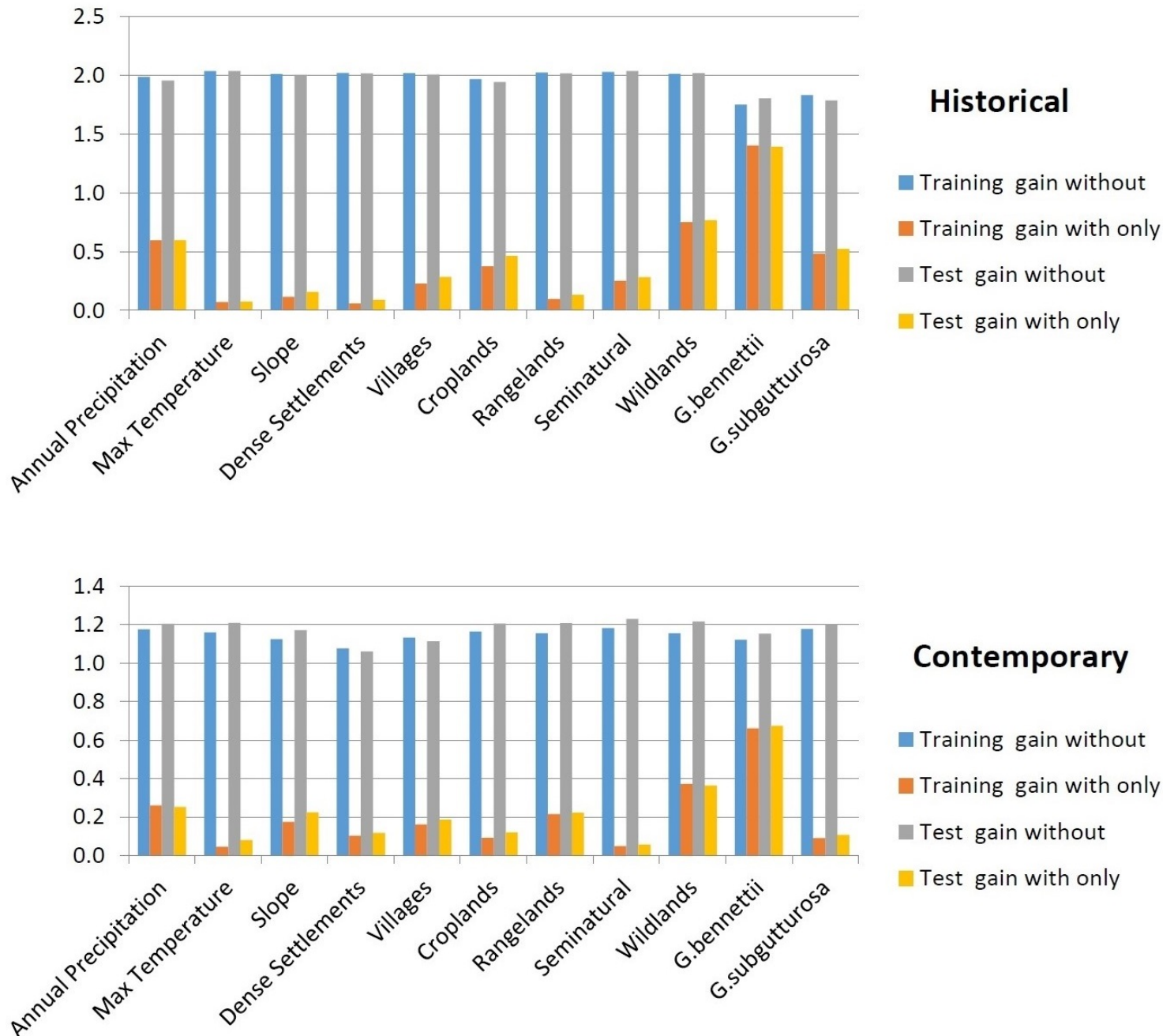


Figure S3: Jackknife results of environmental factors used in the historical and contemporary models. For each variable, the difference in average gain and between models built with and without that variable is presented. Variables with smaller differences are the ones most related to species distribution.

Supplementary Information

Availability of prey and natural habitats are related with temporal dynamics in range and habitat suitability for Asiatic Cheetah
Leili Khalatbari, Gholam Hosein Yusefi, Fernando Martínez-Freiría, Houman Jowkar, José Carlos Brito

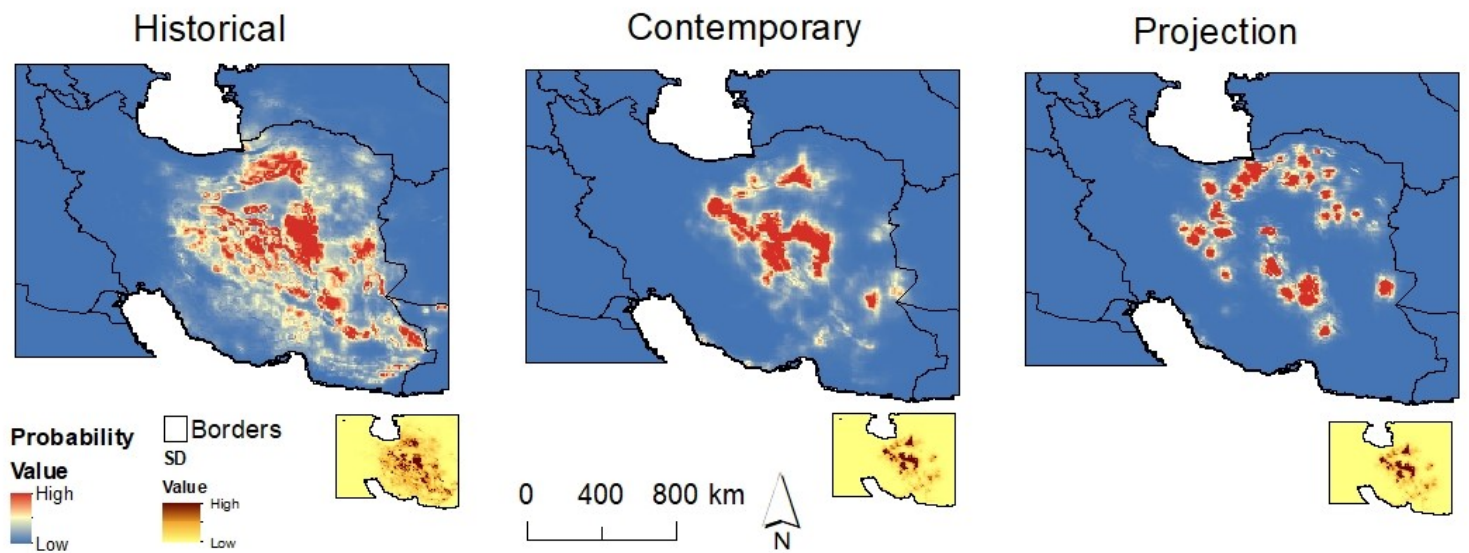


Figure S4: Average and standard deviation (small insets) for probability of occurrence of the Asiatic cheetah in historical, contemporary and projection models.