

*Supplementary Information*

Combining multiple tools to provide realistic potential distributions for the mouflon in Sardinia: species distribution models, spatial pattern analysis and circuit theory.

Puddu G., Maiorano L.

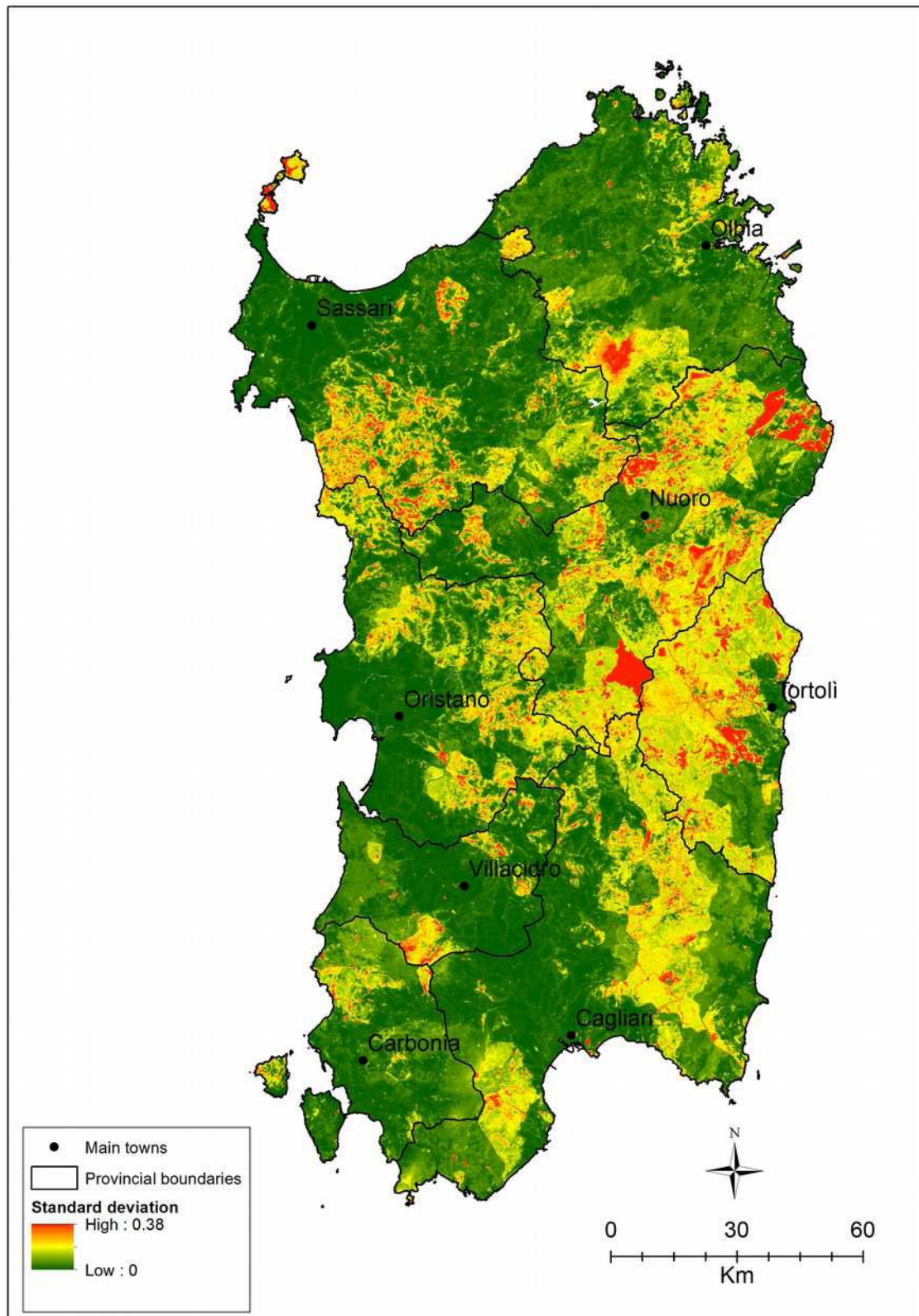
**Table S1:** aggregation of the original land cover classes available in the regional land use database.

<b>CORINE code</b>	<b>Name</b>	<b>Environmental variables</b>
21	Arable land	
22	Permanent crops	
23	Pastures	
241	Annual crops associated with permanent crops	Agricultural landscape
2411	Annual crops associated with permanent crops (olive tree)	
2412	Annual crops associated with permanent crops (vineyard)	
2413	Annual crops associated with permanent crops (cork oak cover <25%)	
311	Broad-leaved forest	
312	Coniferous forest	
313	Mixed forest	Forest and woodland
3231	Sclerophyllous vegetation	
3242	Transitional woodland-shrub	
243	Land principally occupied by agriculture, with significant areas of natural vegetation	
244	Agro-forestry areas	
331	Beaches, dunes, sands	
321	Natural grasslands	Pastures and open lands
3232	Sclerophyllous vegetation	
3241	Transitional woodland-shrub	
332	Bare rocks	
333	Sparsely vegetated areas	

*Supplementary Information*

Combining multiple tools to provide realistic potential distributions for the mouflon in Sardinia: species distribution models, spatial pattern analysis and circuit theory.

Puddu G., Maiorano L.

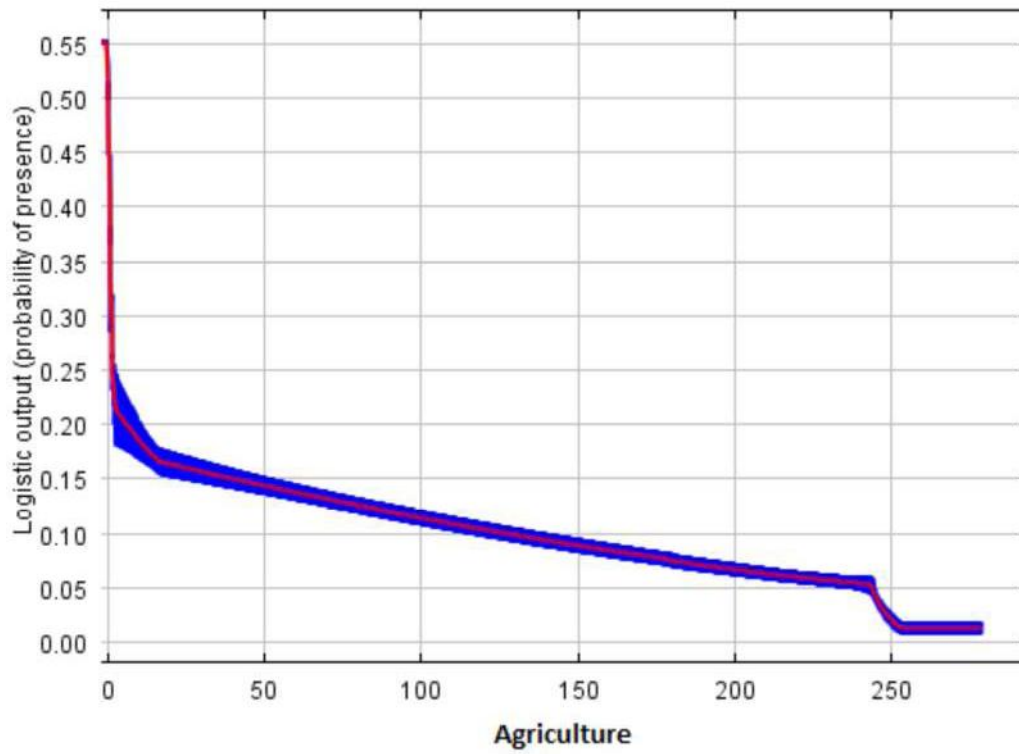


**Figure S2:** Variance in probability of presence values obtained through the 1000 species distribution models.

*Supplementary Information*

Combining multiple tools to provide realistic potential distributions for the mouflon in Sardinia: species distribution models, spatial pattern analysis and circuit theory.

Puddu G., Maiorano L.

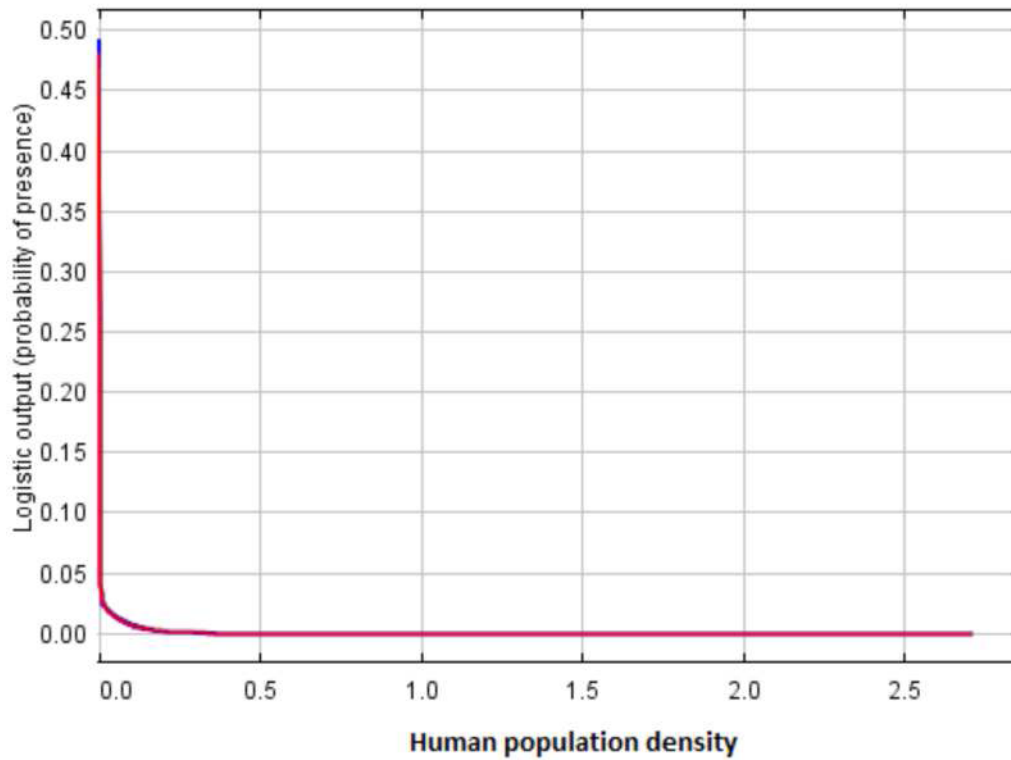


**Figure S3a:** Response curve for agriculture. The red line is the average for all models, while the area in blue identifies the standard deviation around the mean.

*Supplementary Information*

Combining multiple tools to provide realistic potential distributions for the mouflon in Sardinia: species distribution models, spatial pattern analysis and circuit theory.

Puddu G., Maiorano L.

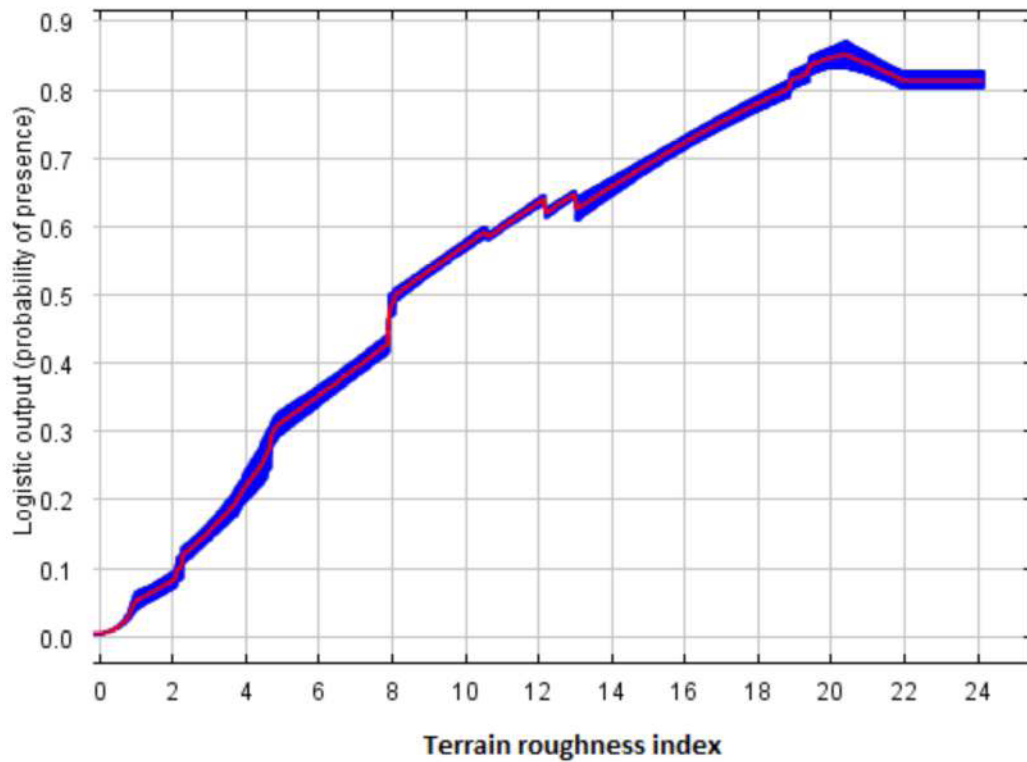


**Figure S3b:** Response curve (average for all models) for human population density. The red line is the average for all models, while the area in blue identifies the standard deviation around the mean.

*Supplementary Information*

Combining multiple tools to provide realistic potential distributions for the mouflon in Sardinia: species distribution models, spatial pattern analysis and circuit theory.

Puddu G., Maiorano L.



**Figure S3c:** Response curve for terrain roughness index. The red line is the average for all models, while the area in blue identifies the standard deviation around the mean.