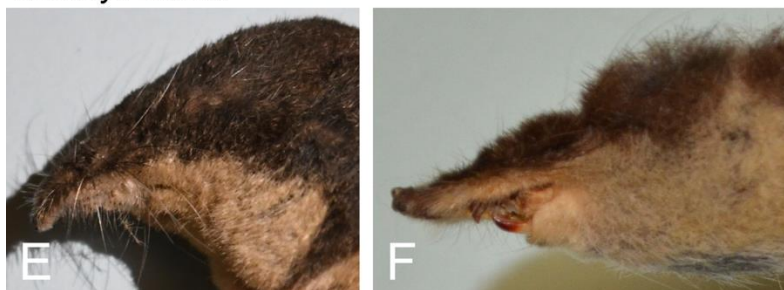


Neomys fodiens



Neomys milleri



Supplement S2. Figure of here examined *Neomys fodiens* and *N. milleri* specimens, in which the shape of the facial line of demarcation did not match the hypothesis as suggested by Lapini et al. (1995). A – D depict specimens that were determined as *N. fodiens* according to traditional identification methods but exhibit a facial line of demarcation as typical for *N. milleri*. E – F depict specimens that were determined as *N. milleri* according to traditional identification methods but exhibit a facial line of demarcation as typical for *N. fodiens* (for details and references see main text and Fig. 1).

A) MHNG 1256.010: *N. fodiens* (France), species determination according to measurement of the mandibular coronoid process (Bühler 1964).

B) NMBE 1007874: *N. fodiens* (Switzerland), species determination according to traditional external characteristics (photo mirrored).

C) NMBE 1007875: *N. fodiens* (Switzerland), species determination according to traditional external characteristics.

D) NMBE 1007888: *N. fodiens* (Switzerland), species determination according to traditional external characteristics.

E) BNM 17119: *N. milleri* (Switzerland), species determination according to genetic analyses and measurement of the mandibular coronoid process (Bühler 1964).

F) MHNG 1674.038: *N. milleri* (France), species determination according to traditional external characteristics.