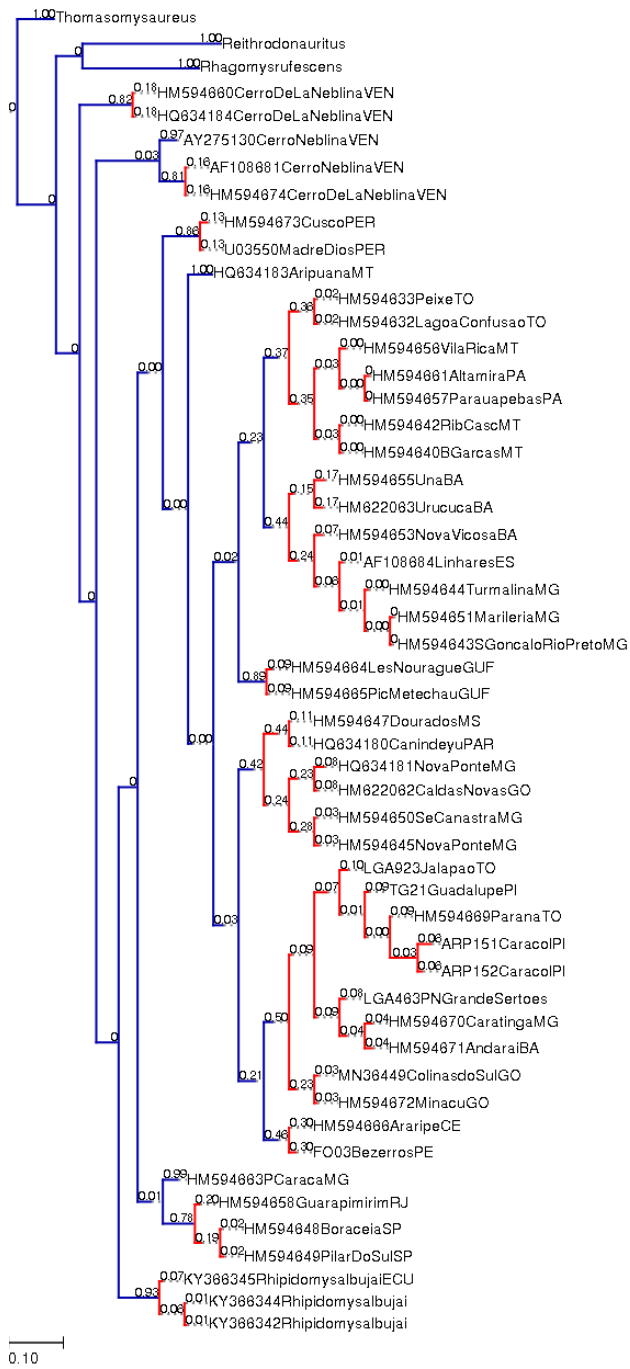


Maximum likelihood solution:



Max likelihood partition
 Species 1 Outgroup (support = 1.000)
Thomasomys aureus
 Species 2 Outgroup (support = 1.000)
Reithrodon auritus

Species 3 Outgroup (support = 1.000)

Rhagomys rufescens

Species 4 (*R. wetzelli*) (support = 0.823)

HM594660CerroDeLaNeblinaVEN, HQ634184CerroDeLaNeblinaVEN

Species 5 (*R. albujai*) (support = 0.927)

KY366345RhipidomysalbujaiECU, KY366344Rhipidomysalbujai, KY366342Rhipidomysalbujai

Species 6 (*R. gardneri*) (support = 0.865)

HM594673CuscoPER, U03550MadreDiosPER

Species 7 (*R. leucodactylus*) (support = 0.999)

HQ634183AripuanaMT

Species 8 (*R. nitela*) (support = 0.889)

HM594664LesNouragueGUF, HM594665PicMetechauGUF

Species 9 (*R. tribei*) (support = 0.987)

HM594663PCaracaMG

Species 10 (*R. itoan*) (support = 0.784)

HM594658GuarapimirimRJ, HM594648BoraceiaSP, HM594649PilarDoSulSP

Species 11 (*R. macconnelli*) (support = 0.974)

AY275130CerroNeblinaVEN

Species 12 (*R. macconnelli*) (support = 0.811)

AF108681CerroNeblinaVEN, HM594674CerroDeLaNeblinaVEN

Species 13 (*R. macrurus*) (support = 0.424)

HM594647DouradosMS, HQ634180CanindeyuPAR, HQ634181NovaPonteMG, HM622062CaldasNovasGO, HM594650SeCanastraMG, HM594645NovaPonteMG

Species 14 (*R. ipukensis/R. emiliae*) (support = 0.368)

HM594633PeixeTO, HM594632LagoaConfusaoTO, HM594656VilaRicaMT, HM594661AltamiraPA, HM594657ParauapebasPA, HM594642RibCascMT, HM594640BGarcasMT

Species 15 (*R. mastacalis*) (support = 0.437)

HM594655UnaBA, HM622063UrucucaBA, HM594653NovaVicosaBA, AF108684LinharesES, HM594644TurmalinaMG, HM594651MarileriaMG, HM594643SGoncaloRioPretoMG

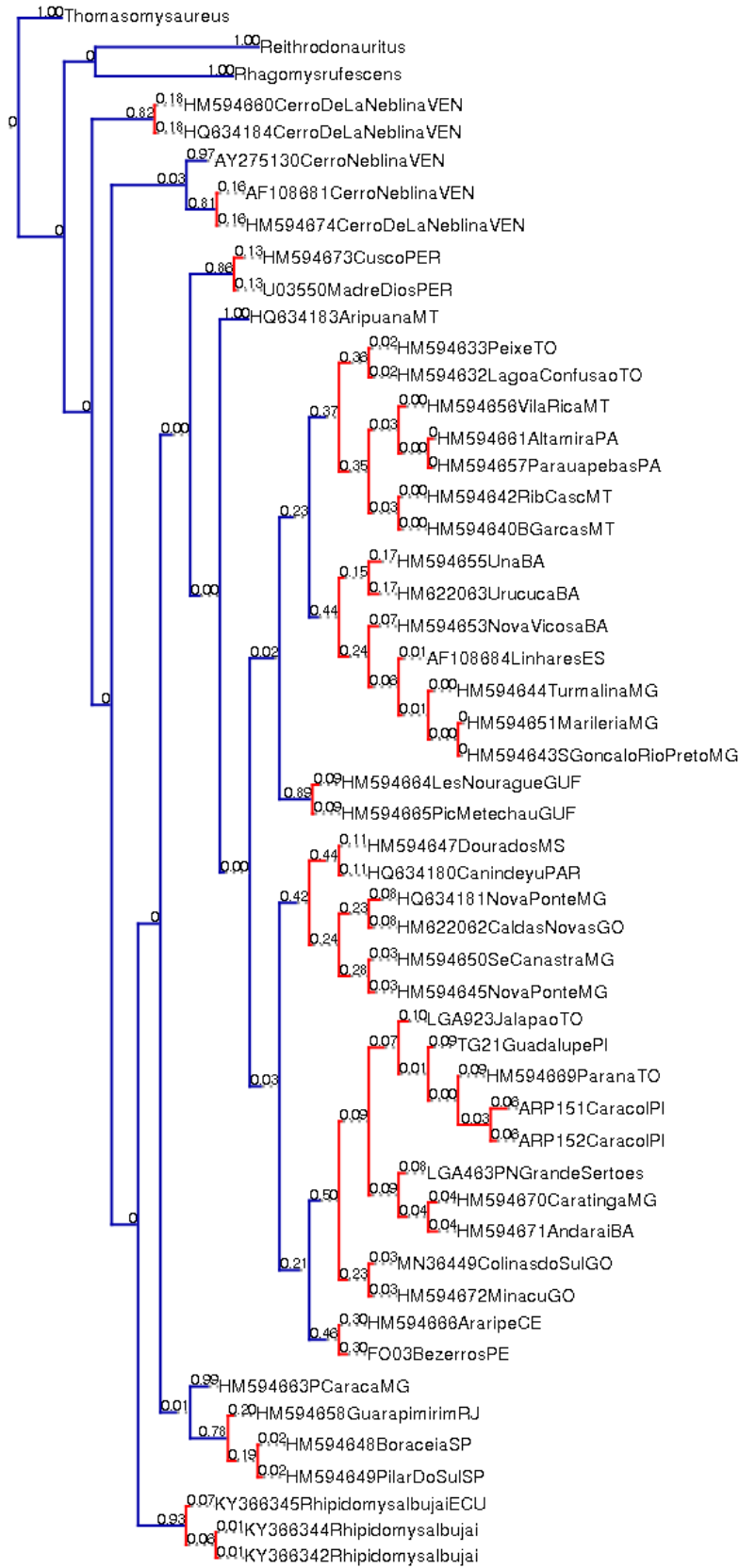
Species 16 (*R. caracolensis*) (support = 0.503)

LGA923JalapaoTO, TG21GuadalupePI, HM594669ParanaTO, ARP151CaracolPI, ARP152CaracolPI, LGA463PNGrandeSertoos, HM594670CaratingaMG, HM594671Andaraiba, MN36449ColinasdoSulGO, HM594672MinacuGO

Species 17 (*R. cariri/R. bezerrensis*) (support = 0.464)

HM594666AraripeCE, FO03BezerrosPE

Highest Bayesian supported solution:



0.10

Most supported partition found by simple heuristic search

Species 1 Outgroup (support = 1.000)

Thomasomys aureus

Species 2 Outgroup (support = 1.000)

Reithrodonauritus

Species 3 Outgroup (support = 1.000)

Rhagomys rufescens

Species 4 (*R. wetzelli*) (support = 0.823)

HM594660CerroDeLaNeblinaVEN, HQ634184CerroDeLaNeblinaVEN

Species 5 (*R. albuja*) (support = 0.927)

KY366345RhipidomysalbujaieCU, KY366344Rhipidomysalbujaie, KY366342Rhipidomysalbujaie

Species 6 (*R. gardneri*) (support = 0.865)

HM594673CuscoPER, U03550MadreDiosPER

Species 7 (*R. leucodactylus*) (support = 0.999)

HQ634183AripuanaMT

Species 8 (*R. nitela*) (support = 0.889)

HM594664LesNouragueGUF, HM594665PicMetechauGUF

Species 9 (*R. macconnelli*) (support = 0.974)

AY275130CerroNeblinaVEN

Species 10 (*R. macconnelli*) (support = 0.811)

AF108681CerroNeblinaVEN, HM594674CerroDeLaNeblinaVEN

Species 11 (*R. tribei*) (support = 0.987)

HM594663PCaracaMG

Species 12 (*R. itoan*) (support = 0.784)

HM594658GuarapimirRJ, HM594648BoraceiaSP, HM594649PilarDoSulSP

Species 13 (*R. ipukensis/R. emiliae*) (support = 0.368)

HM594633PeixeTO, HM594632LagoaConfusaoTO, HM594656VilaRicaMT, HM594661AltamiraPA, HM594657ParauapebasPA, HM594642RibCascMT, HM594640BGarcasMT

Species 14 (*R. mastacalis*) (support = 0.437)

HM594655UnaBA, HM622063UrucucaBA, HM594653NovaVicosaba, AF108684LinharesES, HM594644TurmalinaMG, HM594651MarileriaMG, HM594643SGoncaloRioPretoMG

Species 15 (*R. macrurus*) (support = 0.424)

HM594647DouradosMS, HQ634180CanindeyuPAR, HQ634181NovaPonteMG, HM622062CaldasNovasGO, HM594650SeCanastraMG, HM594645NovaPonteMG

Species 16 (*R. caracolensis*) (support = 0.503)

LGA923JalapaoTO, TG21GuadalupePI, HM594669ParanaTO, ARP151CaracolPI, ARP152CaracolPI, LGA463PNGrandeSertoos, HM594670CaratingaMG, HM594671Andaraiba, MN36449ColinasdoSulGO, HM594672MinacuGO

Species 17 (*R. cariri*/*R. bezerrensis*) (support = 0.464)
HM594666AraripeCE,F003BezerrosPE